

APEX

APEX

Vidterra APEX is a software platform for ISR video asset management, diagnosis and testing. APEX is designed to perform complex video tasks without requiring complex video know-how.



KLV



TAG



SYNC



TAP



DISPLAY



PROCESS



RECORD



STREAM



STREAM



Upload video assets. Get away from maintaining video collections on filesystems that provide no video context.



Search video by name, tag, time, or location. Quickly locate related videos across an entire library.



Tag assets and timelines. Identify video and metadata characteristics and pinpoint issues across common files.



Simulate live streaming video+KLV using recorded files. Execute full system ops checks prior to live missions.

VALIDATE



MEASURE



OPERATE



APEX

SOFTWARE TIERS





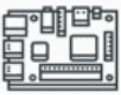
	BASE	PRO	REMOTE	ADVANCED
# OF OUTPUT STREAMS	2	5	5	50
VIDEO STORAGE LIMIT (GB)***	4	10	10	15
DEPLOYMENT	MANAGED	MANAGED	ON-PREMISE	ON-PREMISE
KLV	◆	◆	◆	◆
TAGS (AUTO/MANUAL)	◆	◆		◆
RECORD VIDEO SAMPLES		◆	◆	◆
APEX SYNC		◆	◆	◆
DOWNLOAD VIDEO FILES		◆	◆	◆
MAP / EXPORT KML		◆		◆
API				◆
TAGS (SUGGESTED)				◆
24/7 STREAMING			◆	◆
GPU SUPPORT			◆	◆
SDI OUTPUT**			◆	
NETWORK TAP**			◆	◆

**Requires hardware support (see Vidterra RUCK)

***1 GB = 35 min @ 4 Mbps

APEX

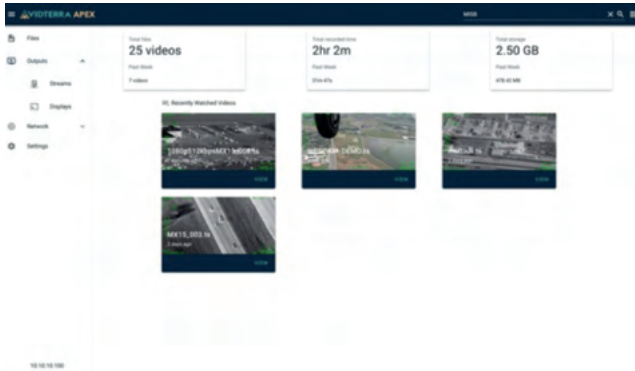
DEPLOYMENT OPTIONS

	BASE	PRO	REMOTE	ADVANCED
 AWS	✓	✓		
 DOCKER			✓	✓
 VMware			✓	✓
 RUCK			✓	
 Raspberry Pi			✓	

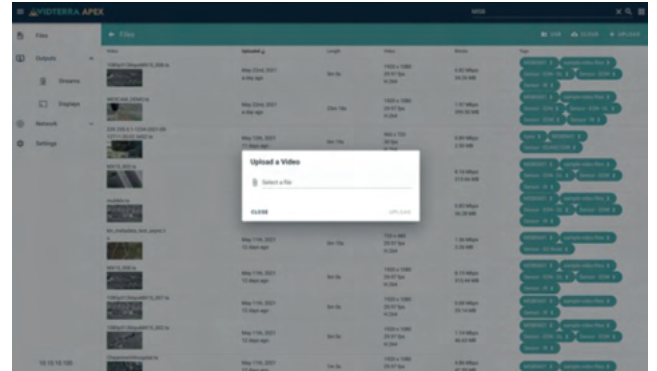
APEX

MANAGEMENT

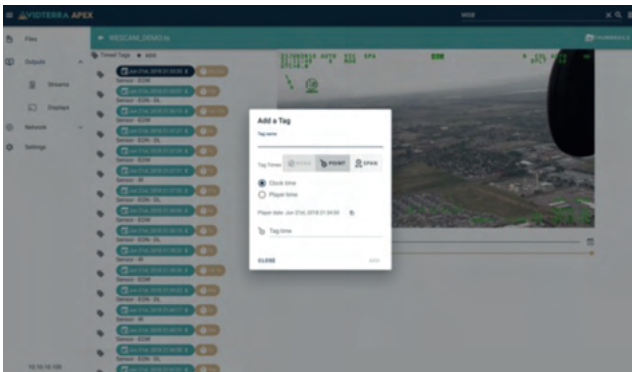
SYSTEM OVERVIEW



UPLOAD



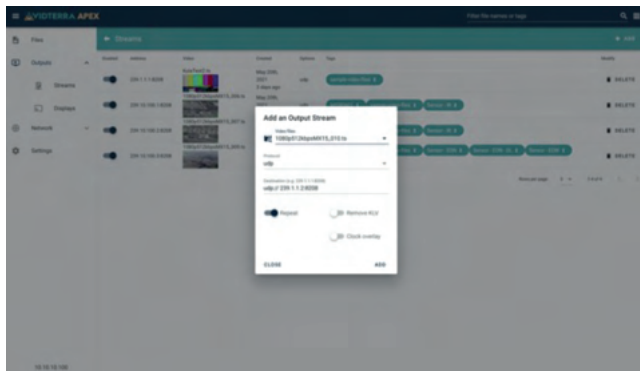
TAG



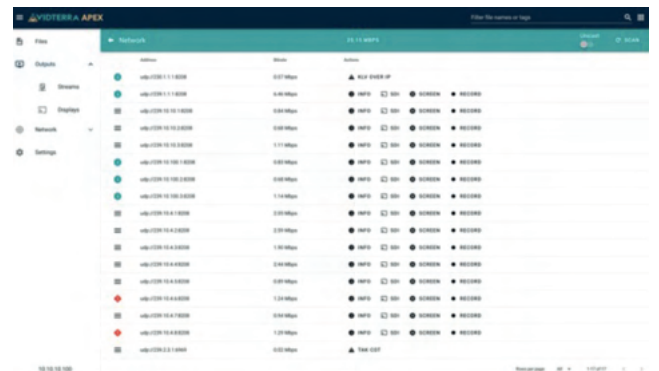
SEARCH/FILTER



STREAM



TAP/SCAN/RECORD



APEX

RUCK

Vidterra RUCK is a portable touchscreen device for hosting APEX:Remote software instances. RUCK combines hardware and software interfaces to streamline rapid video diagnostics and simulation for field applications.

SPECIFICATIONS:

DIMENSIONS (w/o base): 7.5" x 5.6" x 2"

WEIGHT: 1.5 lbs

POWER: 15W @ 5 VDC (USB-C)



Navigate APEX interface using integrated capacitive touch display. No additional laptops or displays required, just plug into network.



ARM-based SoC. Low-power, low-heat. USB-C power.

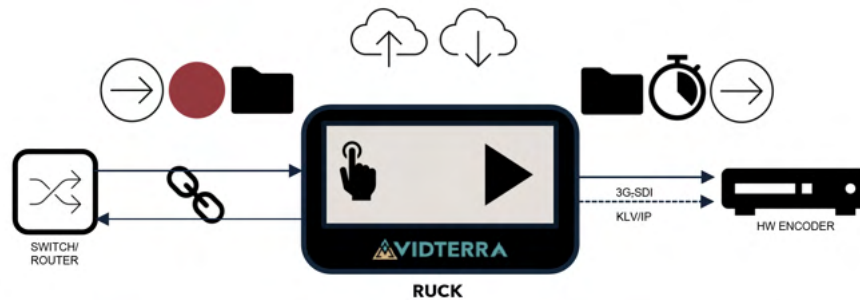


Integrated 3G-SDI OUT. Create simulated sensor video signals using sample files.



Look directly into network video lines using RUCK multi-port TAP. Probe streams and confidence monitor directly from touchscreen.

APEX REMC



APEX

RUCK

REV. 1A

